



# **THE IMPACT OF POPULATION GROWTH ON THE ENVIRONMENT**

Rustamova Rano Parpievna

Associate Professor of the Department of Ecology,  
National University of Uzbekistan named after Mirzo Ulugbek  
e-mail: ranorustamova2022@gmail.com

Ismailova Arofat Mirzakhidovna

Senior Lecturer of the Department of Ecology,  
National University of Uzbekistan named after Mirzo Ulugbek  
e-mail: arofatmirzoxidovna2022@gmail.com

## **Abstract**

Population growth is one of the most significant factors influencing environmental change in the modern world. As the number of people increases, the demand for natural resources, energy, and land also rises, leading to environmental degradation. This article examines the relationship between population growth and environmental issues, highlighting key challenges and possible solutions.

**Keywords:** Population growth, environment, natural resources, pollution, sustainability, climate change.

## **Introduction**

In recent decades, the global population has grown rapidly, reaching over 8 billion people. While this growth reflects advancements in healthcare and living standards, it also creates serious environmental challenges. The environment provides essential resources such as water, air, food, and energy, but these resources are limited. As population increases, human activities intensify, putting pressure on ecosystems and leading to environmental problems.

**Increased Demand for Natural Resources.** Population growth leads to a higher demand for natural resources such as water, forests, minerals, and fossil fuels. As more people require food, housing, and energy, natural resources are extracted at



an unsustainable rate. For example, deforestation occurs when forests are cleared for agriculture or urban development, which reduces biodiversity and disrupts ecosystems.

**Environmental Pollution.** With more people comes increased production of waste and pollution. Industrial activities, transportation, and energy consumption release harmful substances into the air, water, and soil. Air pollution from factories and vehicles contributes to respiratory diseases and climate change. Water pollution from industrial waste and household sewage affects aquatic life and human health.

**Urbanization and Land Degradation.** Rapid population growth often leads to urbanization, where more people move to cities. This results in the expansion of urban areas, often at the expense of agricultural land and natural habitats. Overcrowding in cities increases waste production and strains infrastructure. Additionally, excessive use of land leads to soil erosion and desertification.

**Climate Change.** Population growth contributes to climate change through increased greenhouse gas emissions. More people means higher energy consumption, especially from fossil fuels. This leads to global warming, rising sea levels, and extreme weather events such as floods and droughts. Climate change further threatens food security and biodiversity.

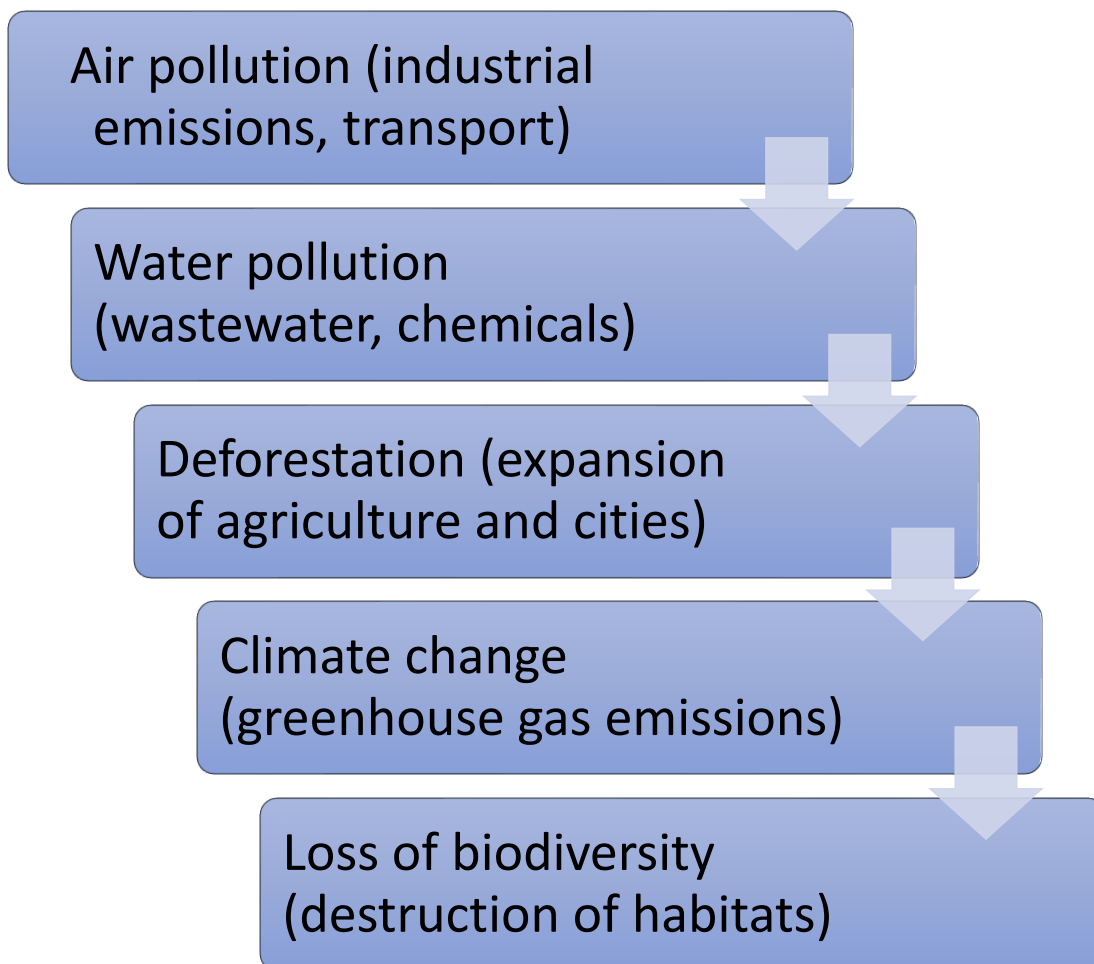
**Loss of Biodiversity.** Human activities such as deforestation, pollution, and urban expansion destroy natural habitats. As a result, many plant and animal species face extinction. Biodiversity loss weakens ecosystems and reduces their ability to provide essential services such as pollination, water purification, and climate regulation.

**Table 1: Global Population Growth (1950–2050)**

Year	World Population (billion)
1950	2.5
1970	3.7
1990	5.3
2010	6.9
2020	7.8
2030*	8.5
2050*	9.7

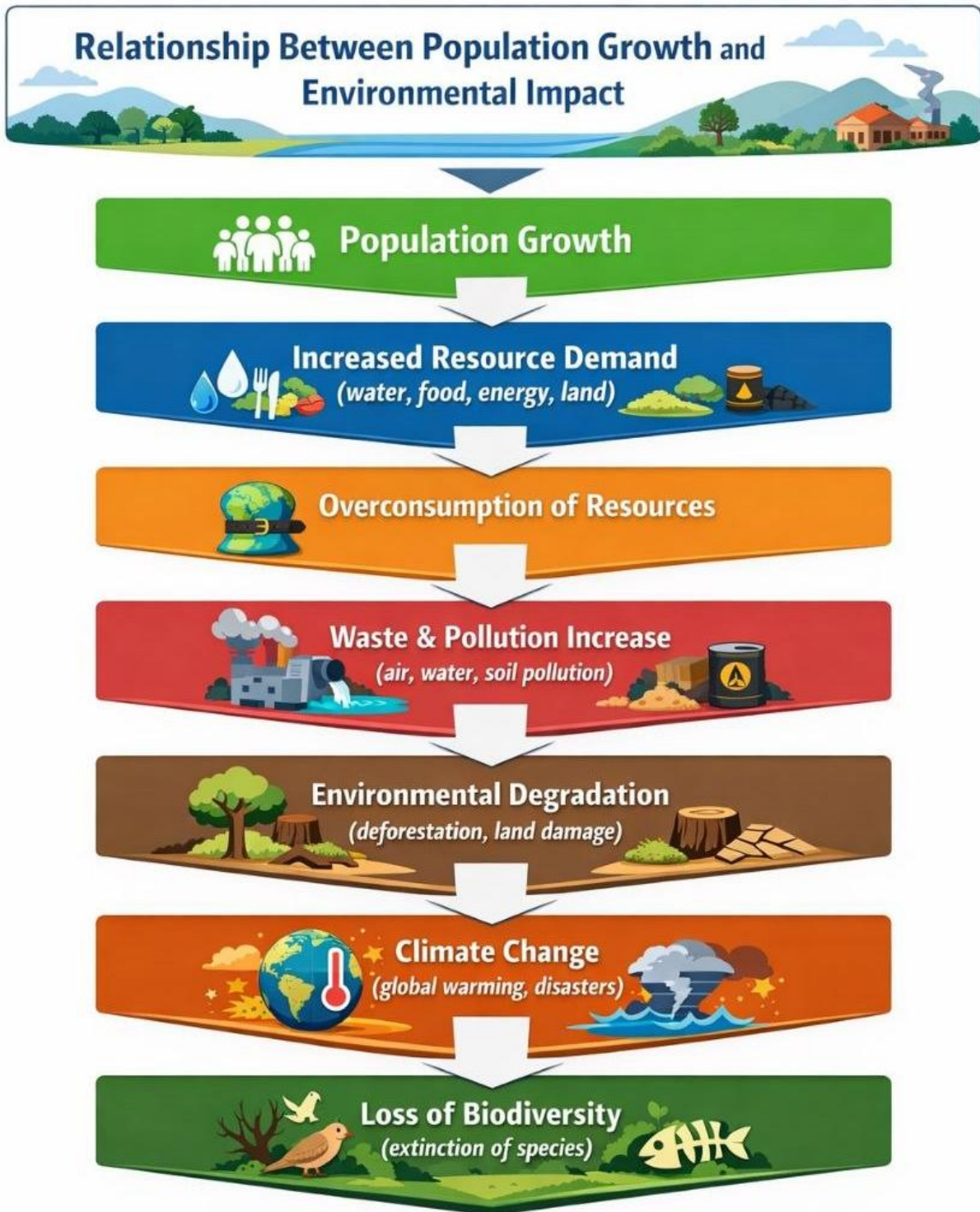
### \*Estimated data

Explanation table-1: The table shows a steady increase in the global population. Rapid growth increases pressure on natural resources and the environment.



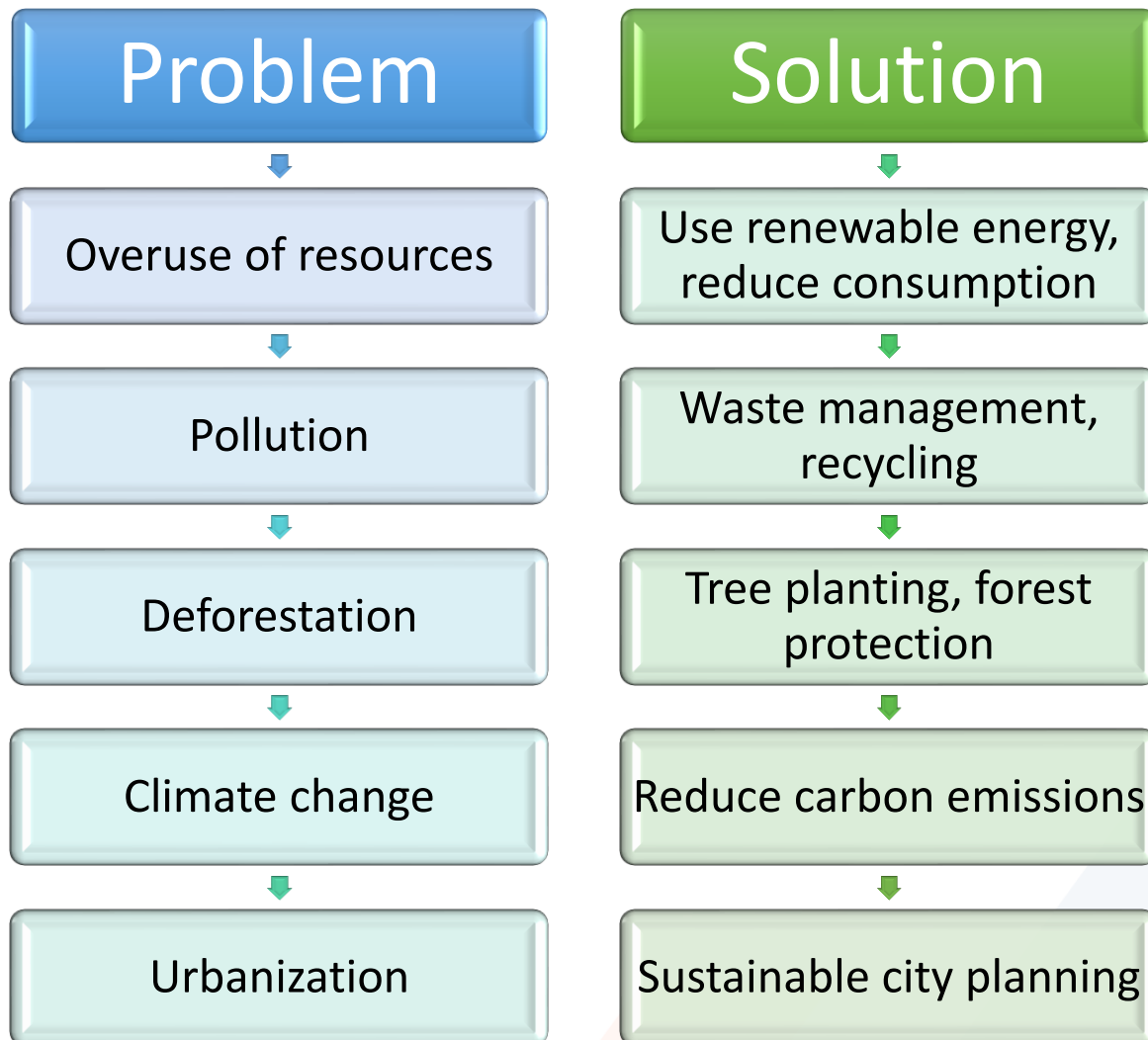
**Table - 2: Main Environmental Problems Caused by Population Growth**

Explanation table-2: These environmental issues are directly linked to increased human activity and consumption.



**Picture-1: Relationship Between Population Growth and Environmental Impact**

This diagram (pic.1) shows a cause-and-effect chain. As population grows, the demand for resources increases, leading to overuse, pollution, and environmental damage. These processes ultimately result in climate change and loss of biodiversity.



**Table -3: Solutions to Environmental Problems**

Explanation table-3: the table presents practical solutions to minimize environmental damage caused by population growth.

To reduce the negative impact of population growth on the environment, several measures can be taken:



- Promoting sustainable development to balance economic growth and environmental protection
- Improving resource management by using renewable energy and conserving water
- Encouraging environmental awareness through education and public campaigns
- Implementing government policies to control pollution and protect natural ecosystems
- Supporting family planning programs to stabilize population growth

### **Conclusion**

Population growth has a significant impact on the environment, leading to resource depletion, pollution, and climate change. While it is impossible to stop population growth completely, its negative effects can be minimized through sustainable practices and responsible policies. Protecting the environment is essential for ensuring a healthy and stable future for coming generations.

### **References**

1. Koristova M. (2025). Impact of Human Activities on the Environment and Population Health. *Education and Science in the XXI Century*, 62-4 (Vol. 1). <https://mpcareer-google.ru/index.php/journal/article/view/2471>
2. Nazarov O.N. (2026). The Impact of Ecology on Demographic Growth: Ideological and Sociocultural Problems. *Bulletin of Bashkir University*, 3, 219-225.
3. United Nations. *World Population Prospects 2026*. New York: UN, 2025.
4. Intergovernmental Panel on Climate Change. *Climate Change 2025: Synthesis Report*. Geneva: IPCC, 2025.
5. World Health Organization. *Air Pollution and Health Report*. Geneva: WHO, 2025.